

# **AB LARS LUNDAHL**

Tibeliusgatan 7  
S-761 50 NORRTÄLJE  
SWEDEN

Phone: Int. +46-176-13930  
Nat. 0176-13930

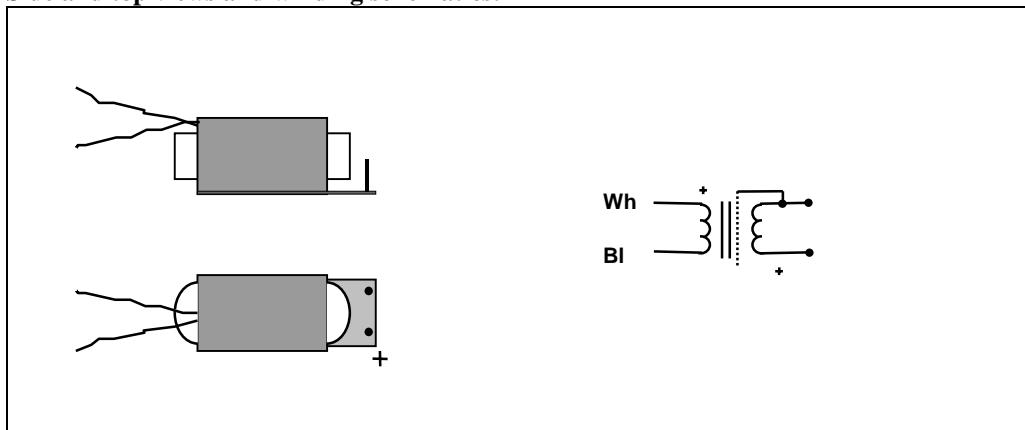
Fax: Int. +46-176-13935  
Nat. 0176-13935

## **XLR Inline Transformer LL6809**

The transformer LL6809 is designed to be housed in Neutrik XLR connector bodies. It can be used for e.g. ground isolation or for balanced-to-unbalanced conversion.

<b>Turns ratio:</b>	1 : 1
<b>Dims:</b>	
<b>Length</b> (Not including connection wires)	31mm
<b>Minimum inner diameter of housing tube</b>	16 mm (Designed to fit inside M17x1 thread)
<b>Weight:</b>	14 grams

### **Side and top views and winding schematics:**



<b>Static resistance of primary</b>	260 $\Omega$
<b>Static resistance of secondary</b>	205 $\Omega$
<b>Core</b>	Amorphous strip core
<b>No-load impedance</b>	typically > 40 k $\Omega$ @ +15 dBU, 50 Hz
<b>Frequency response @ 0 dBU (source 50<math>\Omega</math>, load 10k<math>\Omega</math>)</b>	10 Hz - 100 kHz +/- 0.3 dB
<b>Distortion (THD, source 600<math>\Omega</math>)</b>	0.5% @ +15 dBU, 50Hz
<b>Isolation between windings:</b>	1 kV

R970310